

## Inflatable Light Oil Boom ILB 500/25m - 214747



The Inflatable Light Oil Boom is a lightweight and durable air inflated boom that covers the increasing demand for harbors, nearshore and offshore oil containment boom configurations, mainly deployed for emergency oil spills and protection.

The ILB 500/25m (20 in/82 ft) is manufactured in high visibility red PVC/PU coated woven dtex 1100 polyester fabric. The 25 m boom section has five (5) separate 4.8 m (15.8 ft) long welded air chambers that are fitted with Monsun XG 1 air valves. The boom is supplied with ASTM Z connectors, made in accordance with F962, at each end. The boom is typically stored on dedicated hydraulic powered reels.

The ballast chain is a hot dip galvanized DIN 763 13 mm (1/2 in) steel chain that gives strength, correct and stable deployment in sweeping operations and provides excellent sea keeping properties. The ballast chain is incorporated in the base of the skirt.

Due to its flexibility and rapid deployment, the ILB has been utilized in multiple oil spill containment operations worldwide in e.g. U-sweep configurations.



### TECHNICAL SPECIFICATIONS

Length (section)	25 m	82 ft
Height (deflated)	650 mm	26 in
Weight (operational)	3.7 kg/m	2.5 lbs/ft
Freeboard	230 mm	9.1 in
Draft	270 mm	10.6 in
Buoyancy/weight ratio	12.5:1	
Base fabric	PVC/PU, 1100 dtex polyester	
Fabric weight	950 g/m <sup>2</sup>	28 oz/yd <sup>2</sup>
Fabric tensile strength	4000 N/5 cm	913 lbf/2 in
End connector	ASTM F 962 as standard	

### BENEFITS

- For use in harbors, nearshore and in U-sweep configurations
- Widely used Monsun XG 1 air valve for easy air inflation
- Easy to deploy
- Low maintenance and easy to clean

## 02B Inflatable Containment Booms

### Inflatable Light Oil Boom ILB 750/25m - 214752



The Inflatable Light Oil Boom is a lightweight and durable air inflated boom that covers the increasing demand for harbors, nearshore and offshore oil containment boom configurations, mainly deployed for emergency oil spills and protection.

The ILB 750/25m (30 in/82 ft) is manufactured in high visibility red PVC/PU coated woven dtex 1100 polyester fabric. The 25 m boom section has five (5) separate 4.8 m (15.8 ft) long welded air chambers that are fitted with Monsun XG 1 air valves. The boom is supplied with ASTM Z connectors, made in accordance with F962, at each end. The boom is typically stored on dedicated hydraulic powered reels.

The ballast chain is a hot dip galvanized DIN 763 13 mm (1/2 in) steel chain that gives strength, correct and stable deployment in sweeping operations and provides excellent sea keeping properties. The ballast chain is incorporated in the base of the skirt.

Due to its flexibility and rapid deployment, the ILB has been utilized in multiple oil spill containment operations worldwide in e.g. U-sweep configurations.



#### TECHNICAL SPECIFICATIONS

Length (section)	25 m	82 ft
Height (deflated)	900 mm	35 in
Weight (Operational)	4,9 kg/m	3.3 lbs/ft
Freeboard	300 mm	12 in
Draft	450 mm	18 in
Buoyancy/weight ratio	9.3:1	
Base fabric	PVC/PU, 1100 dtex polyester	
Fabric weight	950 g/m <sup>2</sup>	28 oz/yd <sup>2</sup>
Fabric tensile strength	4000 N/5 cm	913 lbf/2 in
End connector	ASTM F 962 as standard	

#### BENEFITS

- For use in harbors, nearshore and in U-sweep configurations
- Widely used Monsun XG 1 air valve for easy air inflation
- Easy to deploy
- Low maintenance and easy to clean

## 02B Inflatable Containment Booms

### Inflatable Light Oil Boom ILB 1000/25m - 214753



The Inflatable Light Oil Boom is a lightweight and durable air inflated boom that covers the increasing demand for harbors, nearshore and offshore oil containment boom configurations, mainly deployed for emergency oil spills and protection.

The ILB 1000/25m (39 in/82 ft) is manufactured in high visibility red PVC/PU coated woven dtex 1100 polyester fabric. The 25 m boom section has five (5) separate 4.8 m (15.8 ft) long welded air chambers that are fitted with Monsun XG 1 air valves. The boom is supplied with ASTM Z connectors, made in accordance with F962, at each end. The boom is typically stored on dedicated hydraulic powered reels.

The ballast chain is a hot dip galvanized DIN 763 13 mm (1/2 in) steel chain that gives strength, correct and stable deployment in sweeping operations and provides excellent sea keeping properties. The ballast chain is incorporated in the base of the skirt.

Due to its flexibility and rapid deployment, the ILB has been utilized in multiple oil spill containment operations worldwide in e.g. U-sweep configurations.



#### TECHNICAL SPECIFICATIONS

Length (section)	25 m	82 ft
Height (deflated)	1150 mm	45 in
Weight (Operational)	5.4 kg/m	3.6 lbs/ft
Freeboard	300 mm	12 in
Draft	700 mm	27 in
Buoyancy/weight ratio	12.3:1	
Base fabric	PVC/PU, 1100 dtex polyester	
Fabric weight	950 g/m <sup>2</sup>	28 oz/yd <sup>2</sup>
Fabric tensile strength	4000 N/5 cm	913 lbf/2 in
End connector	ASTM F 962 as standard	

#### BENEFITS

- For use in harbors, nearshore and in U-sweep configurations
- Widely used Monsun XG 1 air valve for easy air inflation
- Easy to deploy
- Low maintenance and easy to clean



## 02B Inflatable Containment Booms

### Inflatable Light Oil Boom ILB 1200/25m - 214755



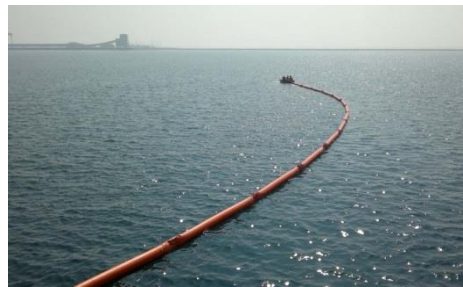
The Inflatable Light Oil Boom is a lightweight and durable air inflated boom that covers the increasing demand for harbors, nearshore and offshore oil containment boom configurations, mainly deployed for emergency oil spills and protection.

The ILB 1200/25m (47 in/82 ft) is manufactured in high visibility red PVC/PU coated woven dtex 1100 polyester fabric. The 25 m boom section has five (5) separate 4.8 m (15.8 ft) long welded air chambers that are fitted with Monsun XG 1 air valves. The boom is supplied with ASTM Z connectors, made in accordance with F962, at each end. The boom is typically stored on dedicated hydraulic powered reels.

The ballast chain is a hot dip galvanized DIN 763 13 mm (1/2 in) steel chain that gives strength, correct and stable deployment in

sweeping operations and provides excellent sea keeping properties. The ballast chain is incorporated in the base of the skirt.

Due to its flexibility and rapid deployment, the ILB has been utilized in multiple oil spill containment operations worldwide in e.g. U-sweep configurations.



#### TECHNICAL SPECIFICATIONS

Length (section)	25 m	82 ft
Height (deflated)	1350 mm	53 in
Weight (Operational)	5,8 kg/m	3.9 lbs/ft
Freeboard	400 mm	16 in
Draft	800 mm	32 in
Buoyancy/weight ratio	20:1	
Base fabric	PVC/PU, 1100 dtex polyester	
Fabric weight	950 g/m <sup>2</sup>	28 oz/yd <sup>2</sup>
Fabric tensile strength	4000 N/5 cm	913 lbf/2 in
End connector	ASTM F 962 as standard	

#### BENEFITS

- For use in harbors, nearshore and in U-sweep configurations
- Widely used Monsun XG 1 air valve for easy air inflation
- Easy to deploy
- Low maintenance and easy to clean